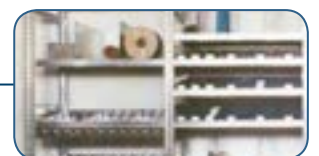


# Contents

- Pg 2-3. Timber Shelving**
- Pg 4-5. Post Shelving**
- Pg 6-7. Panel Shelving**
- Pg 8-9. Mobile Shelving**
- Pg 10-11. Longspan Shelving**
- Pg 12-13. Pallet Racking**
- Pg 14-15. Coolroom Shelving**
- Pg 16-17. Plastic Bins & Vehicle Storage**
- Pg 18-19. Library Shelving**
- Pg 20-21. Display Shelving**
- Pg 22-23. Glass Display Cases**
- Pg 24-26. Shop Fittings**
- Pg 27. Personal Storage**
- Pg 28. Metalsistem**



# Timber Shelving



Natural timber shelving is made from a renewable resource that brings an environmentally friendly atmosphere to your home, office, workshop or warehouse. This versatile shelving system is available in a number of sizes and can easily meet your requirements. Extra bays and shelves can easily be added later making this a versatile and cost effective storage system.

## **Timber shelving solutions are:**

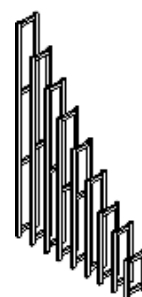
- Flexible, quick, easy to install
- Easy to adjust or add shelves to at any time
- Durable, due to the strength of solid pine timber
- No nuts and bolts are required
- Shelves are smooth and flat both sides
- Fully adjustable, demountable and easy to relocate
- Aesthetically pleasing - will blend with any type of decor

## **Available in a number of finishes:**

- Natural solid pine timber
- Clear lacquer finish
- Stain or paint finish
- Washed finish

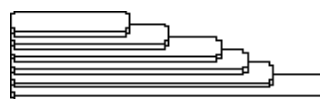


### Heights (mm)



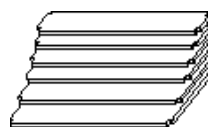
512mm
762mm
915mm
1220mm
1524mm
1829mm
2100mm
2400mm
2745mm

### Lengths (mm)



455mm
600mm
800mm
900mm
1000mm
1200mm

### Depths (mm)



235mm
292mm
381mm
457mm
610mm
762mm

### Options

- Panelled type upright
- Back panels for rear
- Front kickboards
- Crossbracing for rear
- Wall fastening brackets
- Enquire for other options

### Easy to Assemble

Timber shelving requires no nuts and bolts to assemble. Assembly is quickly completed in a few simple stages.

Do it yourself or we can arrange our team to install it for you with our 2 year installation guarantee.





# Post Shelving



We have a great range of post shelving made in New Zealand. A versatile and functional storage system can easily be achieved to meet your requirements using slotted angle and metal shelves.

Extra bays and shelves can be simply added later, making this a very adaptable and cost effective storage system.

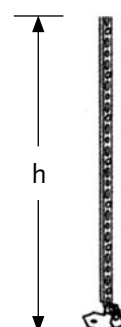
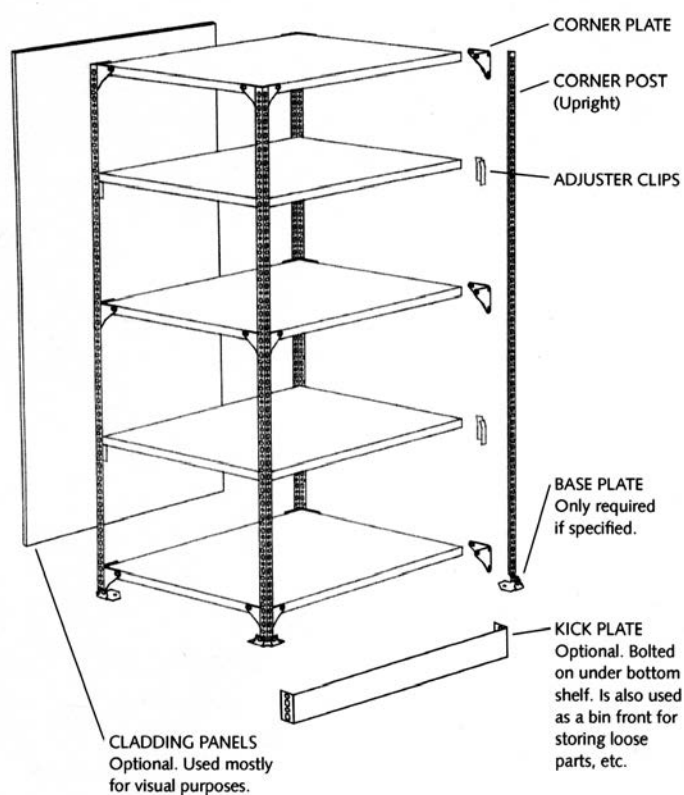
## Post shelving is ideal for:

- Parts storage
- Document storage
- Workshops
- Garages

## Post shelving features are:

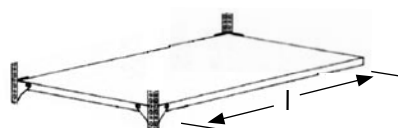
- **Strong** - Up to 150kg per shelf
- **Safe** - Free standing
- **Adjustable** - Adjust shelves to suit your requirements
- **Sturdy** - Bolted construction
- **Versatile** - Extra shelves can be added or removed to meet your requirements





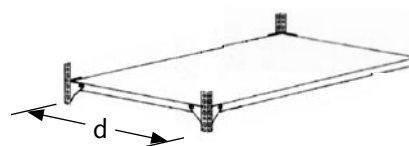
### Heights (mm)

900mm
1200mm
1500mm
1800mm
2100mm
2400mm
3000mm



### Lengths (mm)

600mm
610mm
900mm
915mm
1200mm



### Depths (mm)

225mm
300mm
350mm
375mm
400mm
450mm
600mm
750mm
900mm



### Options

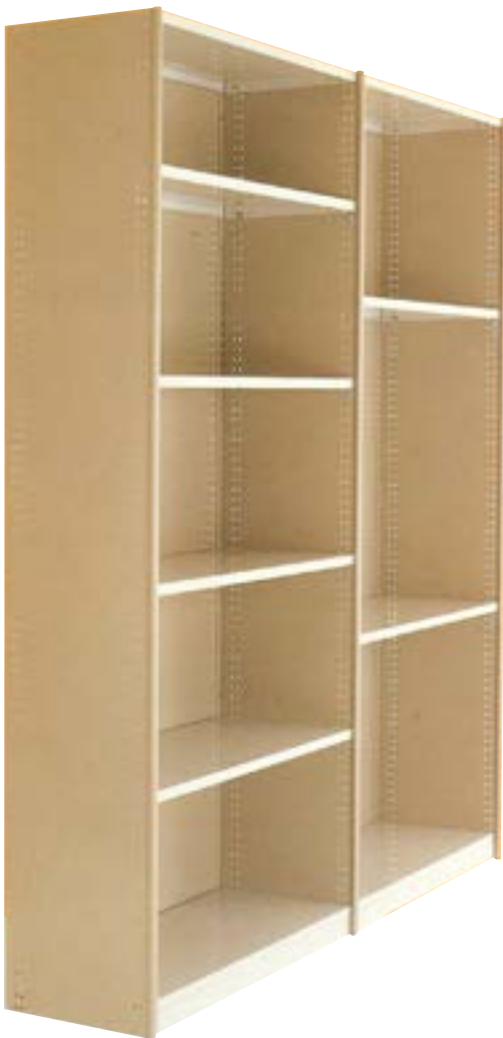
- Corner bracing
- Crossbracing for rear
- Wall fastening brackets
- Base feet

### Easy to Assemble

Post shelving requires nuts and bolts to assemble. Assembly is quickly in a few simple stages.

Do it yourself or we can arrange our team to install it for you with our 2 year installation guarantee.

# Panel Shelving



Our company has a great range of panel shelving made in New Zealand. These versatile shelving systems are available in a number of sizes to easily meet your requirements.

Extra bays and shelves can simply be added later, making this a versatile and cost effective storage system.

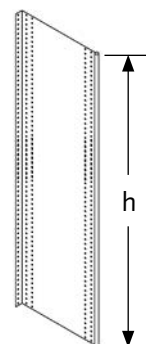
## Panel shelving is ideal for:

- Light to medium weight storage
- Used in offices and warehouses
- Filing
- Workshops
- Garages

## Panel shelving features:

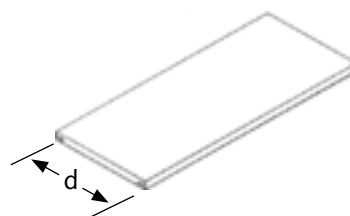
- **Strong** - Up to 100kg per shelf
- **Safe** - Free standing
- **Adjustable** - Adjust shelves to suit your requirements
- **Sturdy** - Bolted construction
- **Versatile** - Extra shelves can be added or removed to meet your requirements





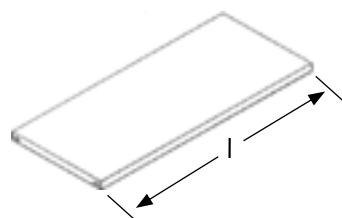
### Heights (mm)

1800mm
2100mm
2400mm



### Depths (mm)

225mm
300mm
350mm
375mm
400mm
450mm
600mm



### Lengths (mm)

600mm
610mm
900mm
915mm
1200mm

### Options

- Back panels for rear
- Front kickboards
- Crossbracing for rear
- Wall fastening brackets

### Easy to Assemble

Panel shelving requires nuts and bolts to assemble. Assembly is quickly completed in a few simple stages.

Do it yourself or we can arrange our team to install it for you with our 2 year installation guarantee.



# Mobile Shelving



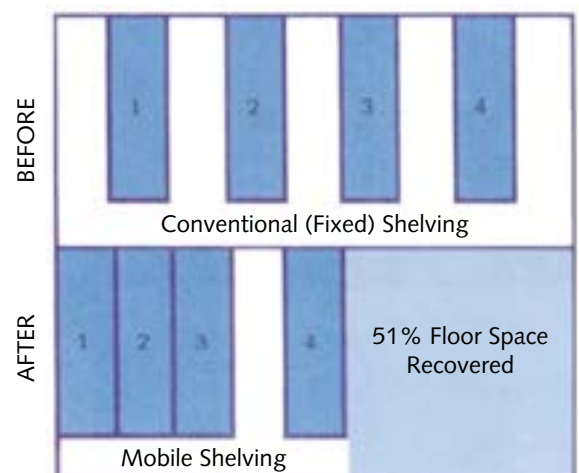
Mobile shelving systems are a fantastic way to save space, time and money.

Ideal where space is at a premium and you need to retrieve your files quickly and efficiently.

## Features:

- **Space** - great space saver
- **Secure** - units can be locked for privacy
- **Strong** - medium load capacity
- **Safe** - and easy to use
- **Adjustable** - shelves to suit your situation
- **Versatile** - extra shelves or mobiles can be added later
- **Relocatable** - units can be moved later

## Maximising Limited Storage Space Efficiently



Example of how you can save valuable space.





Mechanical Assisted Mobile for Larger Units

## Customise

Our company designs and installs mobile shelving systems and offers a free, no obligation quote including drawing.

Customised to your storage area.



Wooden/Timber Mobile System



Infill Flooring

# Longspan Shelving



Longspan shelving is a strong but very simple shelving system. Ideal as a heavy duty parts or innovative retailing shelving system. It is capable of higher loading as it is more robust than normal post or panel style shelving. Available in a large range of sizes it guarantees a solution to your storage problems. A great cost and space efficient system.

## Features:

- High load capacity - endures heavy loads up to 1000kg per level
- Modular - available in many sizes, easily adjusted and added on to
- Economical - maximises utilisation of space for minimal expense
- Cost effective
- Custom built options available







### Shelf Options

- MDF/Chipboard - cost effective option for general storage purposes
- Melteca shelves
- Plywood

### Easy to Assemble

Longspan shelving requires no bolts, screws or tools to assemble. Assembly is quickly completed in 3 simple stages.

Do it yourself or we can arrange our team to install it for you with our 2 year installation guarantee.

## Standard Sizes

### Heights (mm)

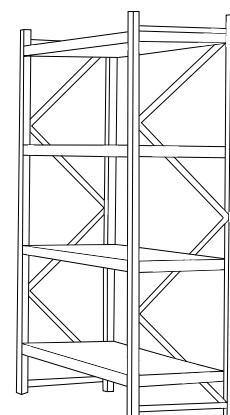
900mm
1200mm
1600mm
1800mm
2100mm
2400mm
2700mm

### Depths (mm)

450mm
600mm
750mm
900mm
1200mm

### Lengths (mm)

600mm
900mm
1200mm
1800mm
2400mm
2700mm



Other sizes available on request





# Pallet Racking



Selective Pallet Racking



Drive In Racking

We offer a huge range of new and used pallet racking. Available in a range of lengths, heights and depths, this is a very versatile, strong storage system for bulk storage and large items.

## Features:

- **Strong** - very high load capacity
- **Safe** - free standing and/or dyna bolted
- **Adjustable** - beam levels easily adjusted to your requirements
- **Sturdy** - heavy duty clip together construction
- **Modular** - beams and extra bays are simply added or removed to meet your requirements
- **Easy access** - by standard forklifts
- **Versatile** - pallet storage or hand stack



Mezzanine Floor





Canterlever Racking

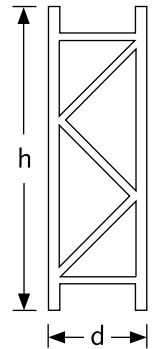


Carpet Racks

## Standard Sizes

### End Frame Heights (mm)

914mm
1820mm
2438mm
3048mm
3656mm
3962mm
4267mm
4572mm
4876mm
5486mm



Other sizes available on request

### End Frame Depths (mm)

600mm
860mm
900mm
1200mm



Standard Beam

### Beam Lengths (mm)

1800mm (3500kg)
2400mm (2800kg)
2743mm (2300kg)
3000mm (1800kg)
3200mm (1400kg)
3400mm (1200kg)

(Load Ratings - approx)

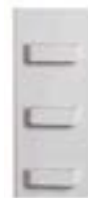


Rebated Beam  
(for shelves)

### Racking Styles:



CD



CA



CV

## Simple to Assemble

Do it yourself or we can arrange our team to install it for you with our 2 year installation guarantee.

# Coolroom Shelving



Our comprehensive coolroom shelving systems have your coolroom space requirements sorted. It is custom built to fit your room, utilising the corners effectively providing easy access. This is a fantastic system for your chiller. Each unit will carry up to 1000kg.

## Features:

- Guaranteed against rust for up to 25 years (for stainless steel)
- Anti-corrosive
- Robust
- Space efficient
- MAF approved
- Flexible in design

## Five finish options and guarantees:

- Stainless Steel - 25 years
- Duoguard (zinc plated and powdercoated) - 15 years
- Zincguard (zinc plated) - 3 years
- Goldguard (zinc plated) - 3 years
- Works (powdercoated) - 1 year







### Shelf Options

- Plastic Shelves (most popular) - the latest technology allows you to wipe, steam clean or even put them in the dishwasher
- Galvanised Panel Shelves - cost effective finish and corrosion resistant, they come with a five year guarantee against rust
- Plastic Coated Steel Wire Racks - coated in white or charcoal, comes with a five year guarantee against rust
- MDF/Chipboard - cost effective option for general storage purposes

### Simple to Assemble

Do it yourself or we can arrange our team to install it for you with our 2 year installation guarantee.

## Standard Sizes

### Heights (mm)

900mm  
1500mm  
1800mm  
2100mm  
2400mm

### Depths (mm)

300mm  
450mm  
600mm  
750mm  
900mm

### Lengths (mm)

#### 30 x 30 x 3 angle

600mm (500kg)  
800mm (500kg)  
900mm (450kg)  
1000mm (400kg)  
1200mm (350kg)  
1400mm (300kg)  
1600mm (250kg)  
1800mm (200kg)

### Lengths (mm)

#### heavy duty channel

1400mm (400kg)  
1600mm (400kg)  
1800mm (350kg)  
2000mm (300kg)  
2200mm (250kg)  
2400mm (150kg)

kgs = evenly distributed load  
Other sizes available on request

### Adjustable Foot



This allows for greater control over the levelling of your shelving units.



# Plastic Bins and Vehicle Storage



Let's get organised! We stock a vast range of New Zealand made plastic and cardboard storage bins.

## Features:

- 5 bright colours - red, blue, green, yellow and grey
- Hygienic and easy to clean
- Stackable
- Wall mount your bins
- Free standing
- Mobile units
- Packaging bench units
- Resistant to most oils/acids



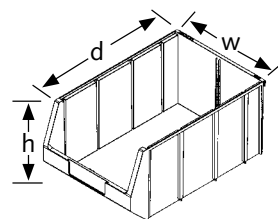




## Standard Sizes

### Plastic Parts Boxes (mm)

B200	100w x 91d x 54h
B201	100w x 173d x 86h
B202-1	100w x 241d x 120h
B202	150w x 241d x 120h
B203	225w x 343d x 160h
B204	450w x 343d x 160h
B205-1	100w x 343d x 160h
B205-2	300w x 343d x 160h
B206	300w x 500d x 200h



### Wall Rails (mm)

900mm long and 1200mm long

A cost effective mounting rail ideal for work benches.



### Louvred Panels

457h x 457w	300h x 300w
610h x 457w	600h x 450w
914h x 457w	600h x 600w
1829h x 457w	1200h x 600w
	600h x 1800w



### Cardboard Parts Boxes (mm)

75w x 300d
100w x 300d
200w x 300d
100w x 100d (Inserts)
70w x 100d (Inserts)

### Van Shelving

900h x 1000w (frame only)  
1200h x 1000w (frame only)  
1500h x 1000w (frame only)

Bin 201 - shelves with bins  
Bin 202 - shelves with bins  
Bin 203 - shelves with bins  
Bin 204 - shelves with bins

Cable Tray



Van Shelving



# Library Shelving



Our company supplies a complete range of library shelving systems. From personal single bay wall mounted shelving through to comprehensive public libraries.

## Let Us Revitalise Your Library:

Beautifully engineered shelving with a shelf design to suit every type of publication, with proven increase in readership. Choose from over 150 different colours to make your library warm and interesting.

Wall-mounted, Free-standing and Rollaway units provide exceptional flexibility of layout allowing us to design the library of your dreams.

Let us create a cohesive and aesthetically pleasing environment that works – our experience counts.

## Libraries for:

- Schools
- Universities
- Businesses
- Accountants
- Lawyers
- Doctors
- Private Collectors

**Display solutions for all types of books**



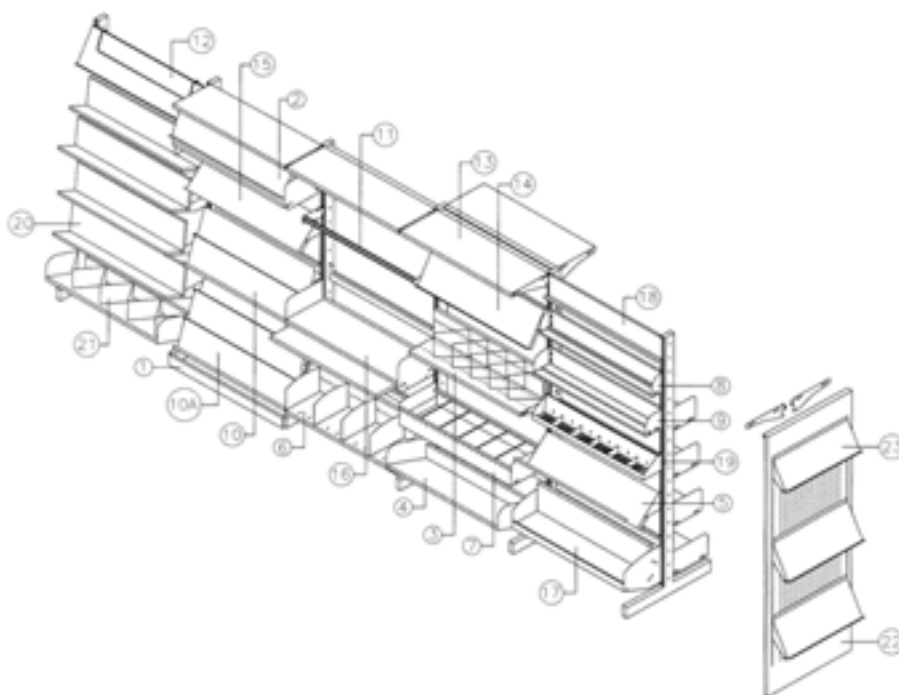
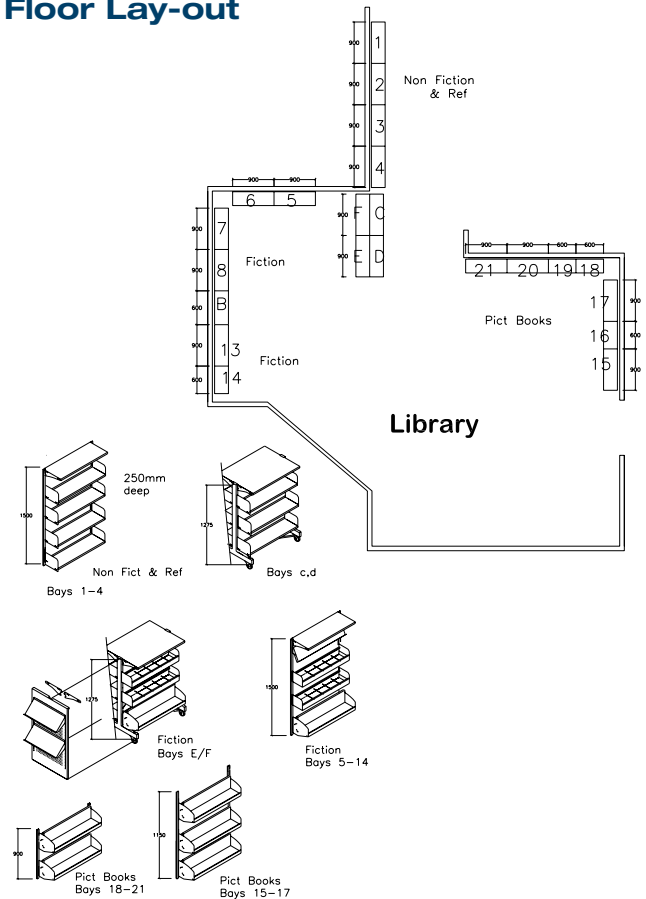
Mobile Unit



### Simple to Assemble

Do it yourself or we can arrange our team to install it for you with our 2 year installation guarantee.

### Example of CAD Drawing and Floor Lay-out



- **Sundry Items** Bookends - Royale, Standard  
Indicator Blocks (A-Z's)

### Accessories

1. Kickplate
2. Periodical Display Shelf
3. Clearview Display Shelf
4. Base Uptilt shelf
5. Serial Shelf
6. Divider Shelf Set
7. Browser Bin  
(Slide Out Option Available)
8. Cassette Shelf
9. CD Shelf
10. 2-Tier Magazine Unit
- 10A. 3-Tier Magazine Unit
11. Audio Visual Bag Rail
12. Pamphlet Shelf Set
13. Canopy Shelf
14. 15° - 60° Display Shelf
15. 45° Display Shelf
16. Sliding Reference Shelf Set
17. Uptilted Display Bin
18. Rear Display Panel
19. AV Shelf  
(2, 3 & 4 Tier also available)
20. Paperback System
21. Zig Zag Support
22. Perf End Panel
23. 60° End Shelf



# Display Shelving



Retail display shelving is available in a large and versatile range of simple clip together display systems. These systems are widely used in service stations, farm merchandising stores and small supermarkets throughout New Zealand.

### Features:

- **Strong** - heavy duty retail display
- **Free standing** - no extra bracing needed
- **Adjustable** - shelves to suit your requirements
- **Sturdy** - clip together construction
- **Versatile** - a huge range of accessories available to suit your needs

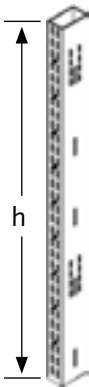
### Options:

- Wire baskets
- Sloping brackets
- Perspex shelf fronts
- Peg board backs
- Wall channel
- Many specialised display fittings

### Standard Sizes

#### Post Heights (mm)

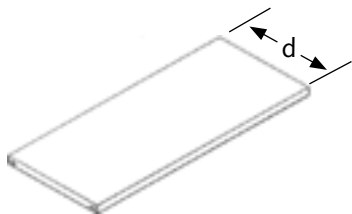
990mm
1219mm
1372mm
1500mm
1600mm
1829mm
1981mm
2286mm



#### Shelf Depths (mm)

All 915mm wide

225mm
300mm
375mm
450mm
525mm
605mm







### Estate Display Range

This full range of solid timber display shelving adds a superior touch to your showroom.

Made in New Zealand from beautifully stained and sealed timber, it will increase the perceived value of your product without even trying!

### Liquor Display

- Superior range of solid timber displays
- Made from solid timber
- Both styles are available either in Rimu or Wenge stain, and with two styles of bottle holder.



### Simple to Assemble

Do it yourself or we can arrange our team to install it for you with our 2 year installation guarantee.



# Glass Display Cases



Our company has a great range of glass display cases available along with a large range of custom build styles available on special order. Made to suit your requirements.

## Features:

- **Secure** - locking doors
- **Appealing** - aluminium and glass construction
- **Adjustable** - glass shelves
- **Lights** - available on most cabinets
- **Bases** - available in wood grain, metal tread plate, powder coated or standard finished board.
- **Powdercoated option**







## Standard Sizes

### Towers (mm)

1800h x 500d x 500w

On plinth base with storage spotlights

1800h x 500d x 500w

Full glass, spot lights, locking door

Other sizes available please inquire

### Counters (mm)

900h x 500d x 1200w

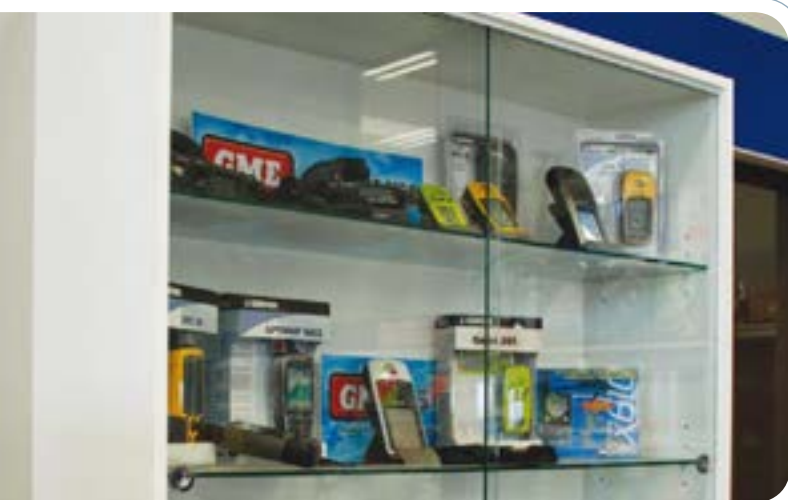
Glass shelf, spotlights, locking door

### Showcase (mm)

1800h x 500d x 1000w

Other Options

- Light Boxes
- Underneath Storage
- Display Backs
- Custom Building
- Special Sizes





# Shop Fittings



Our company is able to source a vast range of shopfitting equipment. We carry a good range of wall channel, brackets etc and can even custom build specialised components and counters. Please enquire for comprehensive individual brochures.

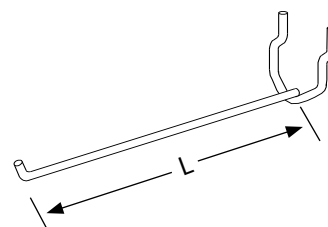
## Options:

- Wall Channel
- Brackets
- Shelves
- Brochure Holders
- Slatwall
- Slatwall Fittings
- Clothing Racks
- Peg Board Prongs
- Mannequins





### Prong - Single



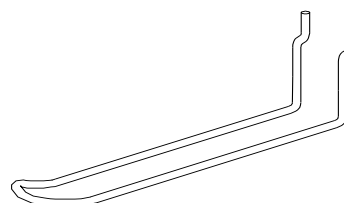
50mm
100mm
150mm
200mm
250mm
300mm

### Prong - Single Heavy Duty



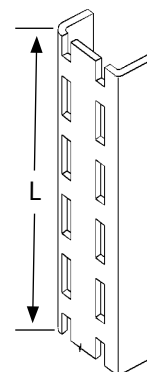
150mm
200mm

### Prong - Double



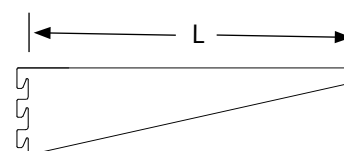
100mm
150mm
200mm

### Wall Channel

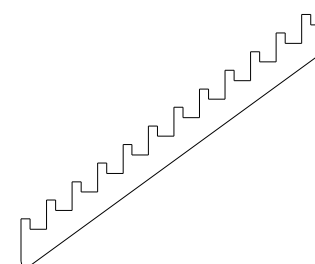


1800mm
2100mm
2400mm

### Brackets



100mm	150mm
200mm	250mm
300mm	350mm
400mm	450mm
500mm	550mm
600mm	

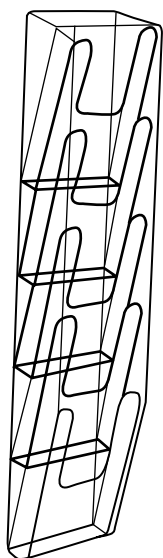


### Step Rail

6-12 hooks crossbar or slatwall mounting. Please enquire for more products and sizes.



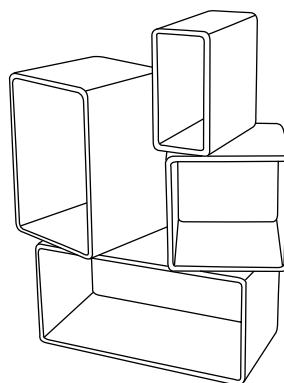
# Shop Fittings Continued



Magazine Rack



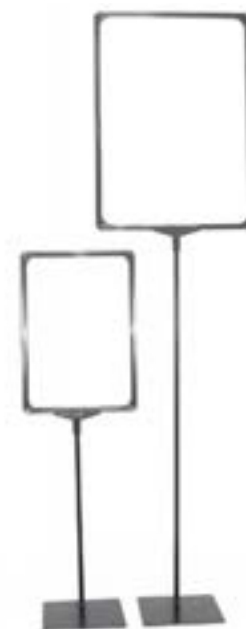
Brochure Holders - Full range available



Merchandising Cubes



Data Strips

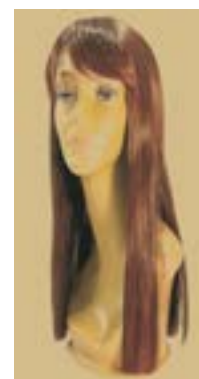


Ticket Holders



4 Arm Waterfall Rack

## Home Shelving



Full mannequins range available

# Personal Storage



Plan Drawer



Filing Cabinet



A4 Cabinet

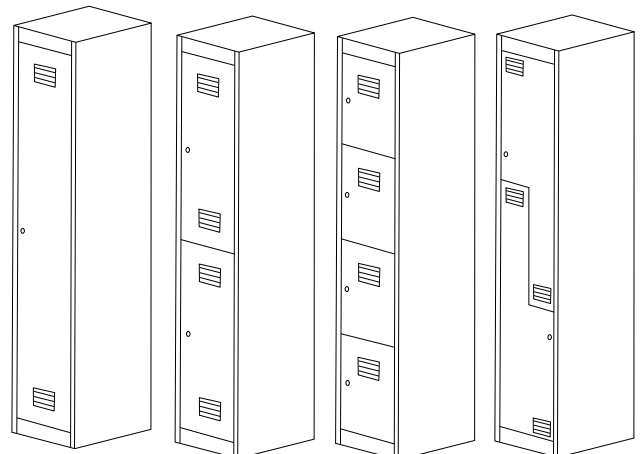


Pigeon Hole Unit

Our company has a range of specialised products available to suit those 'one off' situations. Our team with its wide knowledge of the shelving industry is able to mix and match across a large range, to get that one off solution for you.



Storage Cabinet



Personal Lockers



# Metalsistem



Metalsistemas is a super versatile, very strong, yet lightweight storage system. It is used widely in shop displays and retail areas. A complete range of shelving brackets, slotted channels and associated components is also offered.

## Options:

- Tilted Shelves
- Divided Bins
- Hanging Systems
- Divided shelf
- Metal or Timber Shelves

