



**SHELVING
SHOP
GROUP™**

Your Superstore

- DRIED FRUIT
- SNACKS & NUTS
- MUESLI BARS
- BISCUITS
- CRACKERS
- POTATO CHIPS
- CEREALS
- SPREADS
- DESSERTS
- MILK PRODUCTS
- BAKING
- HERBS & SPICES

**SUPERSTORE
SAVER**

Bundaberg Soft Drink
Range 4pk x 375ml

SAVE \$1.30

\$5.99

**SUPERSTORE
SAVER**

Fantastic Slice Crackers
Range 100g

3 FOR

\$5.50

Assembly Instructions For

MetalMax

Supermarket Shelving System



Effortless

Clip-Together System

- ▶ Quick and easy to assemble.
- ▶ Toolless assembly - no screws, bolts, or tools required.
- ▶ Freestanding - no extra bracing required.



CAMPUS & CO.
Your Superstore

DRIED FRUIT
SNACKS & NUTS
MUESLI BARS
BISCUITS
CRACKERS
POTATO CHIPS

CEREAL
SPREADS
DESERTS
MILK PRODUCTS
BAKING
HERBS & SPICES

**SUPERSTORE
SAVER**

Bundaberg Soft Drink
Range 4pk x 375ml

SAVE \$1.30

\$5.99

Valid until 02/12/22

**SUPERSTORE
SAVER**

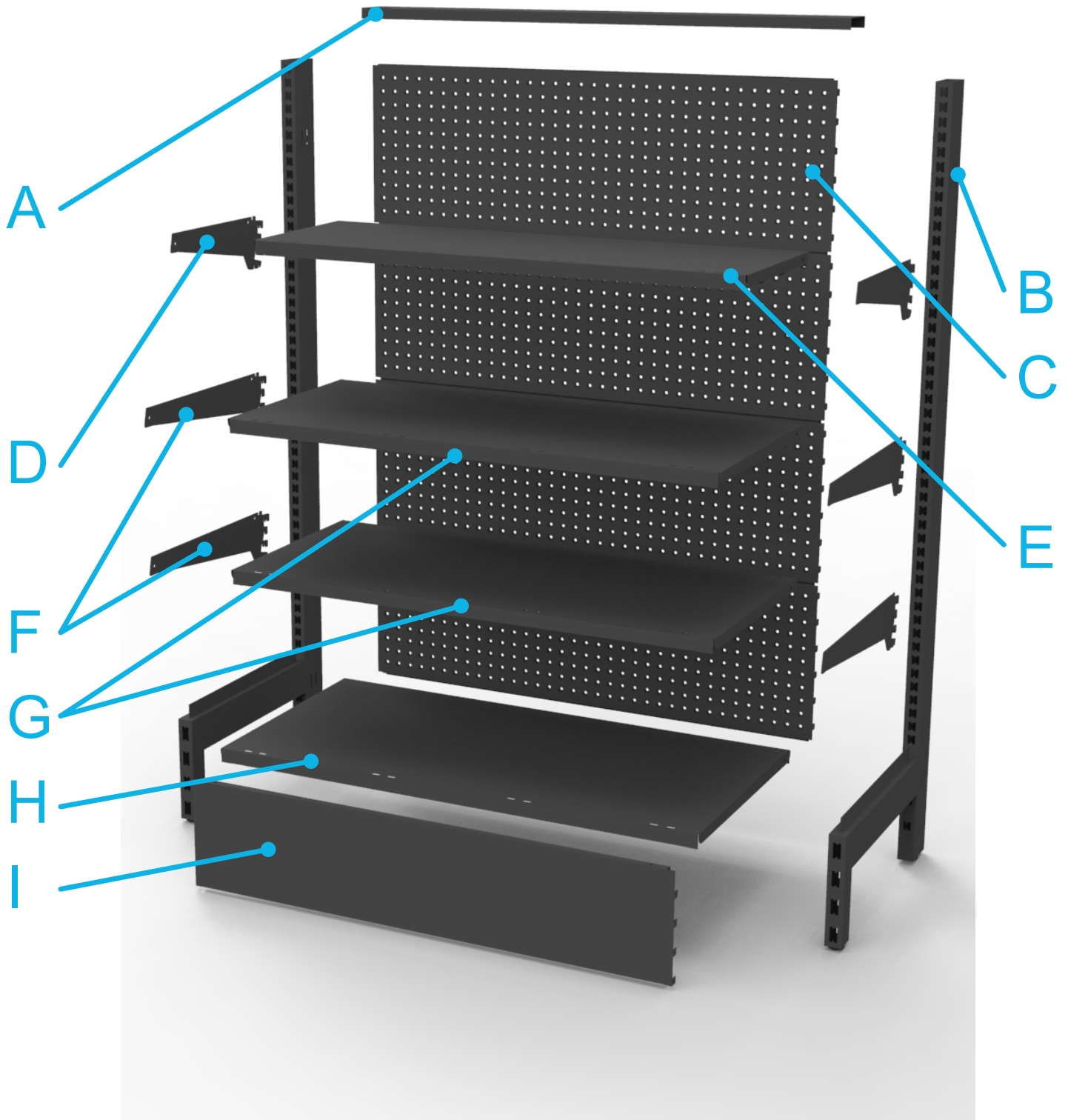
Fantastic Rice Crackers
Range 100g

3 FOR

\$5.50

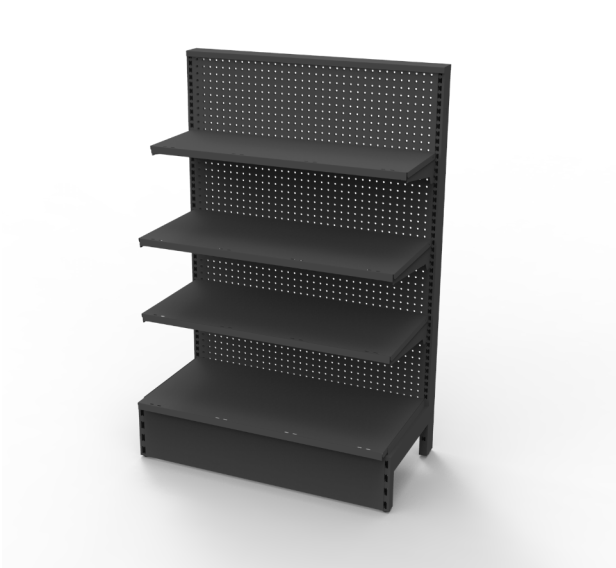
Valid until 02/12/22

Parts List



A	Top Cap	F	Bracket 400mm
B	Post 1400 x 400/450mm	G	Shelf 900 x 400mm
C	Volcano Back 900 x 300mm	H	Base Shelf 900 x 450mm
D	Bracket 300mm	I	Kick Panel 915mm
E	Shelf 900 x 300mm		

Assembly Instructions - Starter Bay



1



- Take 2x Posts
- Clip in a Volcano Panel at the bottom notch.

2



- Clip in the Kickboard.

3



- Adjust feet to make level and improve stability.

4



- Work your way up with additional Volcano Panels. Repeat on opposite side, if double-sided.

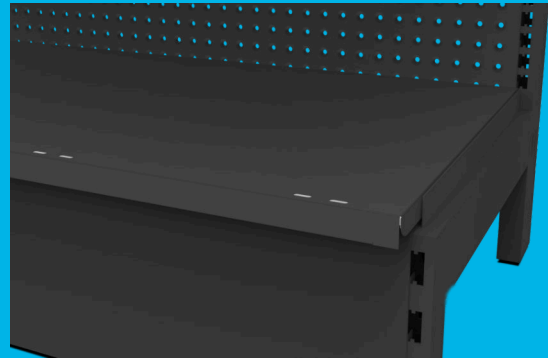
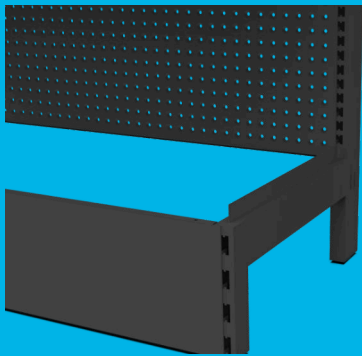
5



- Ensure the top Volcano Panel is flush with the top of the Post.

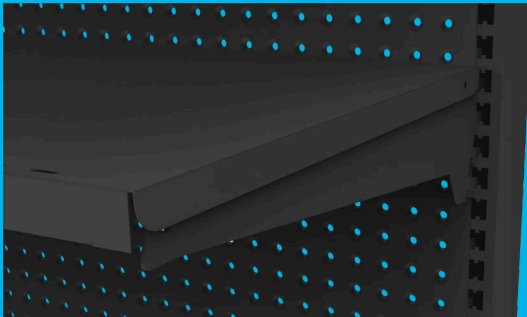
Assembly Instructions - Starter Bay

6



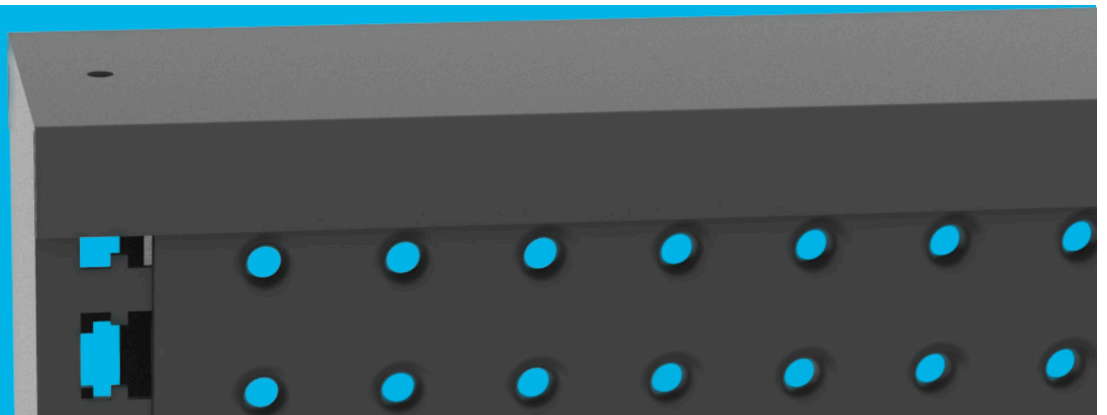
- Attach the Base Shelf.
- Tip: ensure the holes are at the front of the Base Shelf, as pictured. This is for optional accessories, such as the Wire Fronts, as pictured.

7



- Attach the Brackets.
- Place the Shelves onto the Brackets, making sure that the Shelf holes are at the front and the back lip clips into the notch of the back of the Bracket.

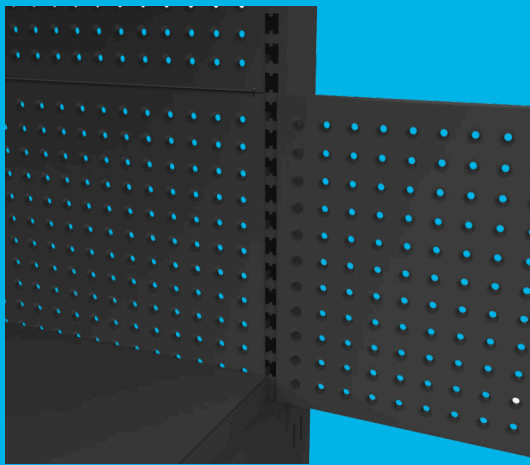
8



- Attach the Top Cap..
- 930mm Top Cap for the first and last bays. 915mm Top Cap for middle bays. 945mm Top Cap for end bays.

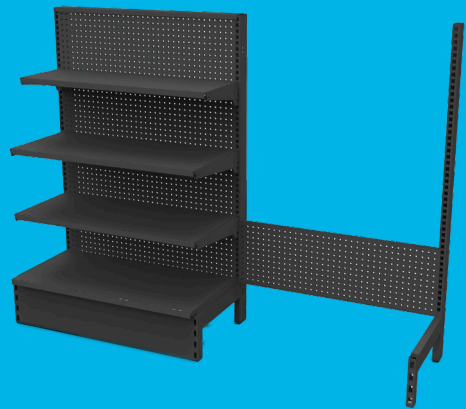
Assembly Instructions - Add-on Bay

9



- Attach a Volcano Panel onto the existing Post of your Starter Bay.
- Ensure Volcano Panels line up side by side.

10



- Attach a new Post to the other end of the Volcano Panel.
- Complete the bay by repeating steps 2-6.

Optional Components

Post Extensions



Simply drop the Post Extensions into the top of the Posts.

Attach additional Volcano Panel(s).

Volcano Panels for End Bays



To improve the appearance of End Bay units, attach Volcano Panels to the rear of the bay.



Available in
Multiple Finishes

Take Your Retail Shelving to the **Next Level**

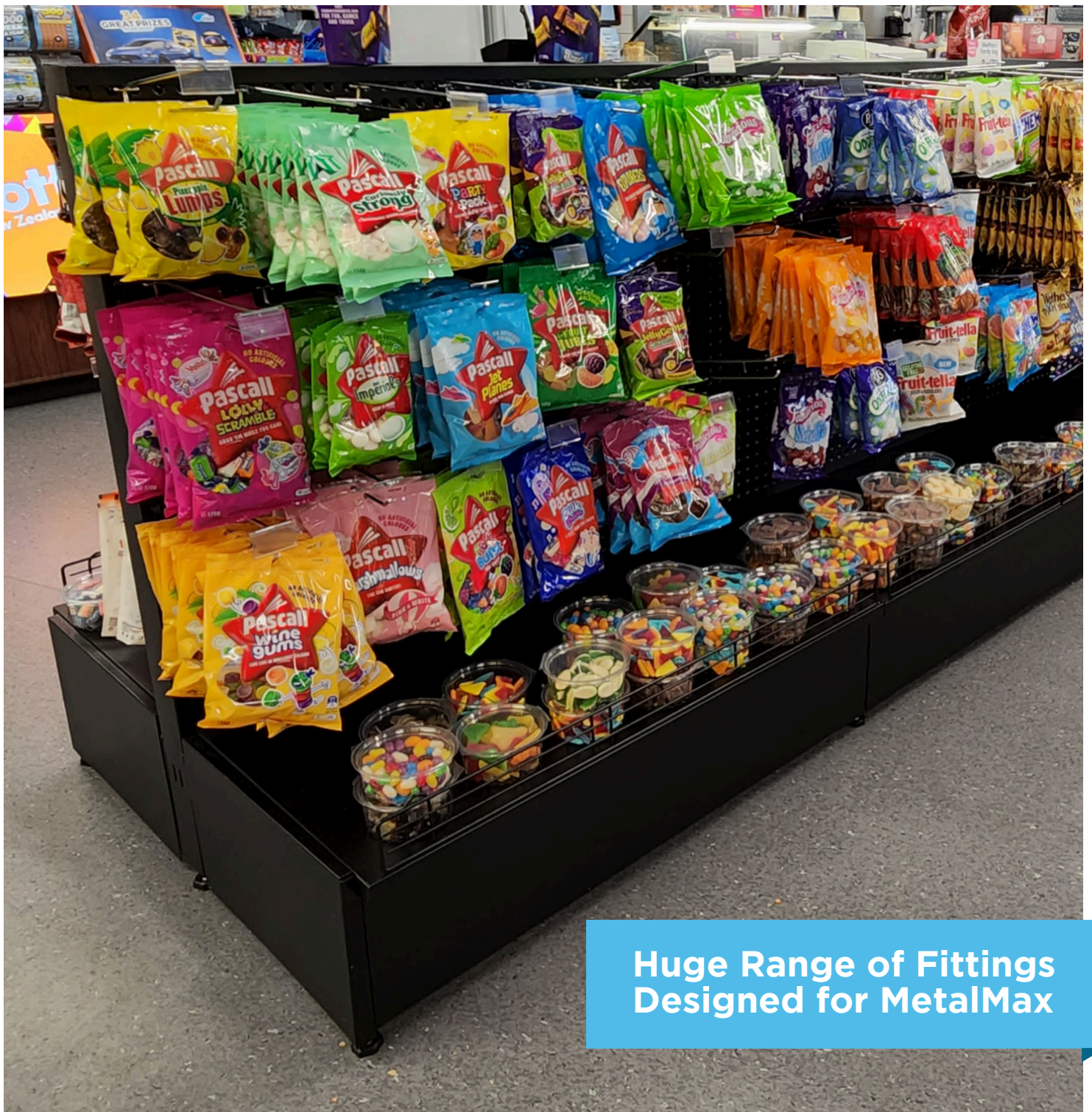
- ▶ New Zealand's most comprehensive supermarket shelving system.
- ▶ Designed and introduced by Shelving Shop Group in 2000.
- ▶ Shelving Shop Group carries large stock quantities for urgent deliveries.



Modular Design

Reach New Heights With MetalMax

- ▶ The 1400mm tall MetalMax system is extendable up to 2300mm.
- ▶ Optional Post Extensions in multiple sizes.



**Huge Range of Fittings
Designed for MetalMax**



▶ **RMS fittings seamlessly integrates with MetalMax.**

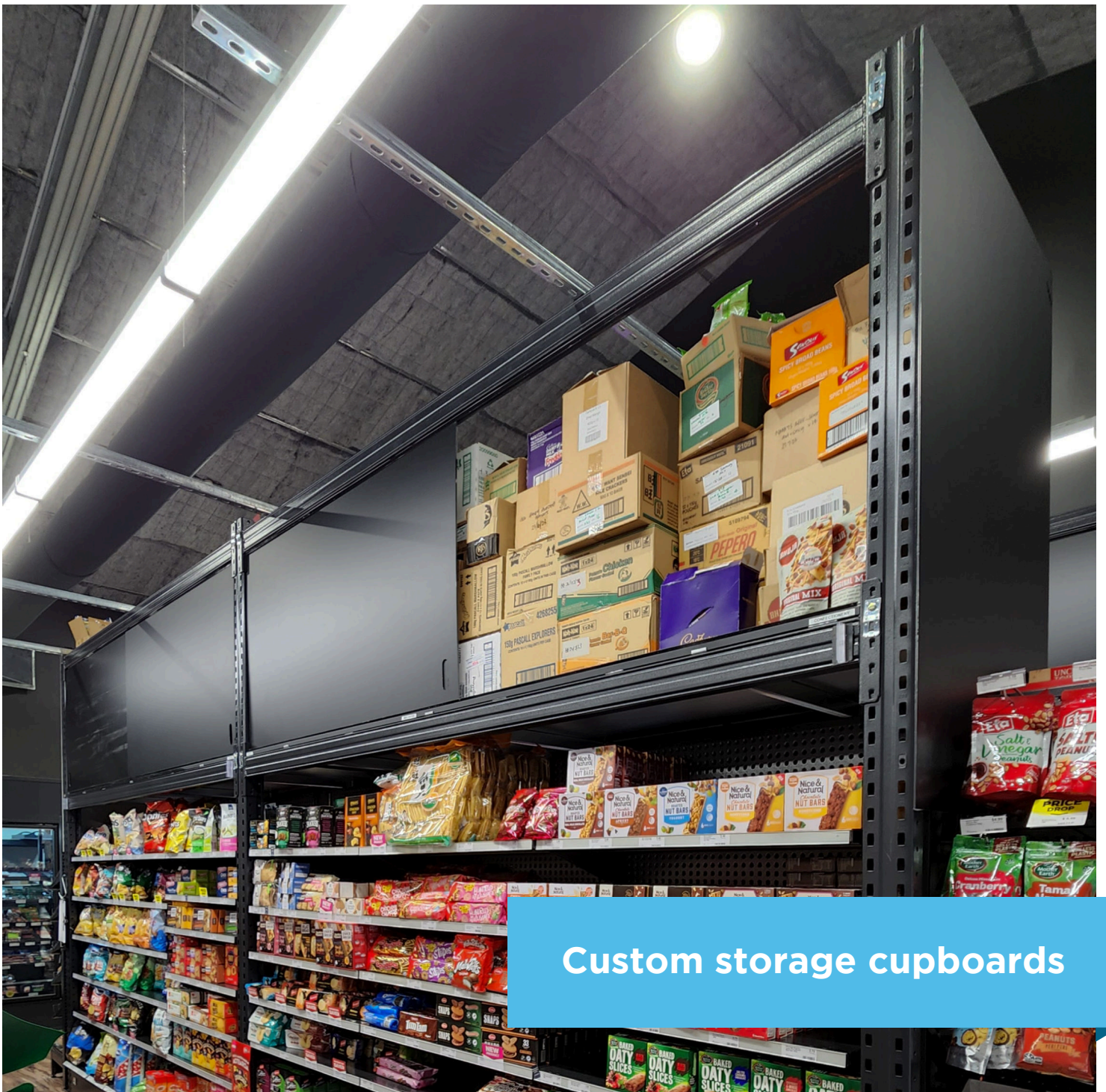
In 2016, Shelving Shop acquired RMS Shopfittings. Our combined strengths have bolstered our commitment to better serving New Zealand's supermarkets, grocers, and convenience stores.



Heavy Duty

For Demanding Environments

- ▶ 80kg uniform distributed load rating per shelf.
- ▶ Heavy-duty metal construction with high quality materials.
- ▶ Designed for New Zealand businesses with heavy products.



Custom storage cupboards

Customised

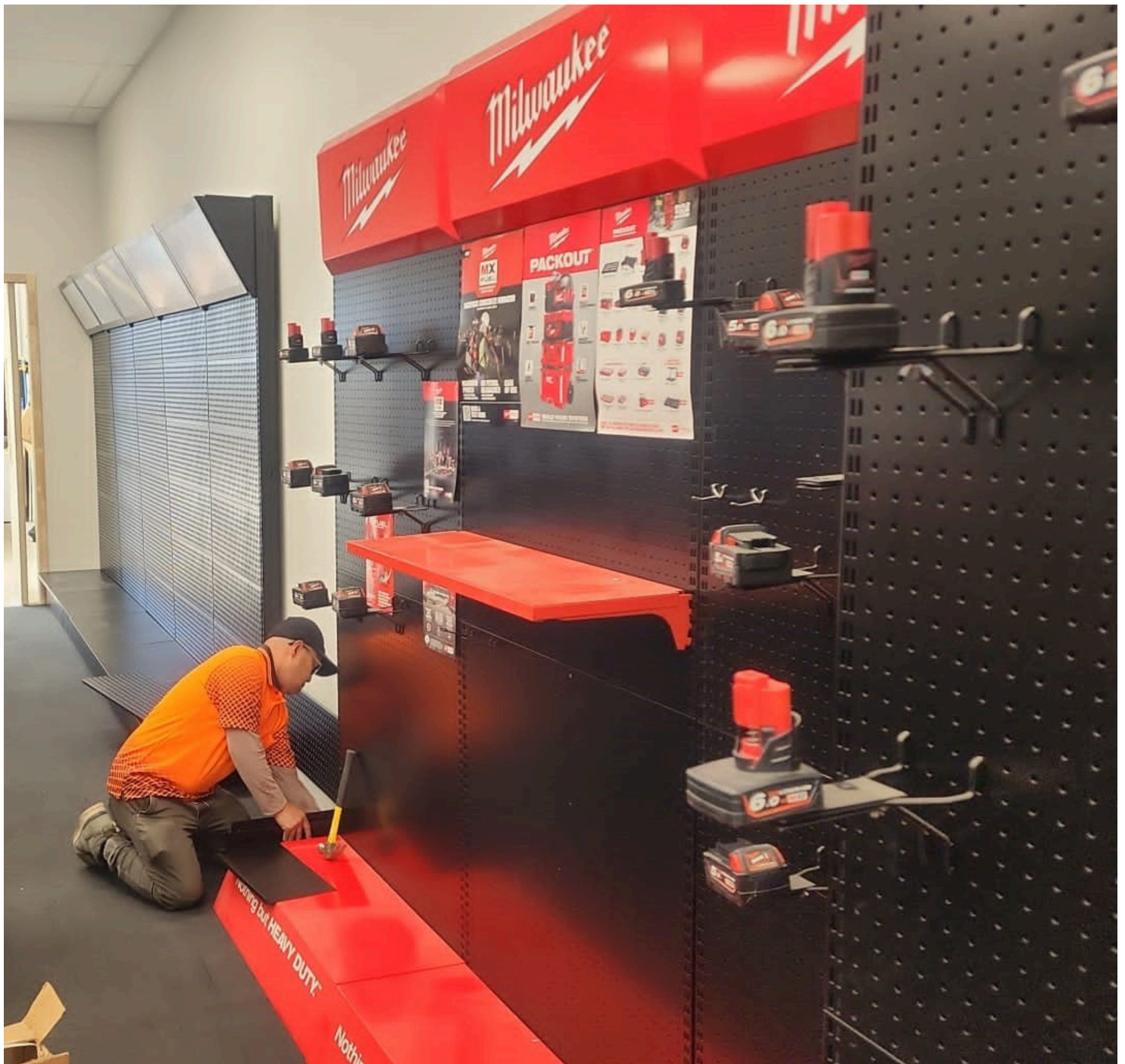
For Your Space

- ▶ Custom manufacturing available.
- ▶ We can manufacture in-house at our local factory as well as with our overseas manufacturing partners.



Custom & Branding Options

- ▶ Custom colours and finishes for brand consistency.
- ▶ Unique branding options available upon request.
- ▶ Custom add-ons to meet the unique requirements of your products.



Need a Professional Installer?

- ▶ **Nationwide installation.**
- ▶ **Minimal disruptions to your store's operations.**
- ▶ **Our installations are fast, efficient, and safe.**



**SHELVING
SHOP
GROUP™**

Call now on

0800 180 280

Shelvingshopgroup.co.nz

Auckland > Hastings > Wellington
Whanganui > Christchurch